

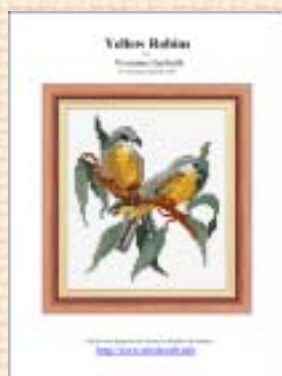
StitchCraft News



StitchCraft 2006 has just been released!

Fantastic New Feature - Email Your Charts to Everyone!

With StitchCraft 2006 you can create your own **Adobe Acrobat PDF Kits** which allows you to send your charts via email to others even if they don't own a copy of StitchCraft.



The kits include:

- **Title Page** with a simulation of your design in a frame,
- **Instructions** on how to sew cross-stitch, needle point or your chart type,
- **Key** for your design with number of skeins,
- **Notes** on your chart,
- your **Chart** in symbols, color or both



StitchCraft takes you through the quick and easy steps and in minutes you have your own design in an Adobe Acrobat PDF Kit!

It's as easy as 1, 2, 3 -

1. Open Your Chart
2. Use the "Create Acrobat PDF Kit" command
3. Email Your Friends or Customers

PDF COMPETITION!!



This month's prize -
**Storybook Favourites in
Cross-Stitch by Gill Souter.**

Including Peter Rabbit, Spot,
Paddington, Angelina,
Winnie-the-Pooh & many more.

How to Enter the Comp -

Simply enter in one of your own designs created with our new PDF Feature at the webpage below!

All entries to the competition will be added to the
StitchCraft Free Charts web page
allowing others to sew your design too!

www.stitchcraft.info/freedesigns/submitfreecharts.htm

StitchCraft News



New Thread Ranges

StitchCraft 2006 has added some exciting new thread ranges! Plus, if you would like any other thread ranges added to the program StitchCraft will add them in free!



Linen Embroidery Floss

DMC brings innovation to the Needlework category with Linen Embroidery Floss.

Linen Embroidery Floss is -

- * Made with 100% western European linen fibers
- * Rustic matte finish
- * Six-strand divisible thread
- * Colorfast
- * Size - 25
- * Colors – Available in 24 beautiful colors ranging from naturals to shy pinks, summer blues and mystic greens.

Light Effects

Gold and silver, precious stones, antique gilt finishes, pearly effects or fluorescent .., the new DMC Light Effects threads add life and dimension to your creations.

The Light Effects Ranges available in StitchCraft are -

- * Jewel Effects
- * Precious Metal Effects
- * Antique Effects
- * Pearlescent Effects
- * Fluorescent Effects



Jewel



Precious Metal



Antique



Pearlescent



Fluorescent

Visit the StitchCraft 'Free Charts' web page to see several free charts using the new DMC Linen Embroidery Floss & Light Effects threads!



Eterna Silk™ is a 100% silk filament thread or ribbon, available in these thread types: Stranded, MiniTwist, and Silk Twist.

Stranded is a virtually flat silk, resulting in a very high luster. Stranded is suitable for embroidery, satin stitch, cross stitch, braiding, kumi-himo, Japanese silk embroidery, fly-tying, beaded flower stem wrapping, or any application requiring a very high luster.

Mini Twist

An easy to use 100% silk filament thread available in 545 solid colors.

MiniTwist strands are tightly twisted, resulting in a slightly lower luster than our Stranded version. Coverage is similar to popular cotton flosses. Suitable for embroidery, cross stitch, Brazilian embroidery, fly-tying, needle weaving, tatting, or any application requiring a lightweight silk thread.

Silk Twist

Distinctive, firm twist, suitable for a variety of stitching techniques, including hardanger, needlepoint, Brazilian embroidery, surface stitching, tatting, knitting, quilting.

StitchCraft Free Charts

StitchCraft now has a 'Free Charts' web page!

There are several Free Charts to choose from in Cross Stitch, Tapestry, Rug Hooking & Beadwork.

Don't miss out on the free charts using the new DMC thread ranges!

All PDF Competition entries will be available on the free charts page too!

www.stitchcraft.info/freedesigns/index.html

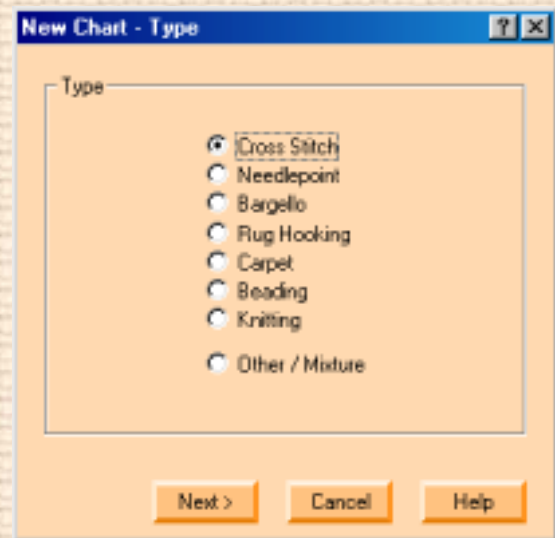
StitchCraft News



Specific Chart Types!

When creating new charts StitchCraft allows you to select either a Cross Stitch, Needlepoint, Bargello, Rughooking, Carpet, Beading or Knitting chart. This will provide you with tools and options specific to your chart type. You can also select Other/Mixture to open tools for all types of design.

The StitchCraft wizard remembers your favourite palette brand and type, material brand and type and the chart size for each chart type and offers these for the default for your new chart.



Other New Features of StitchCraft

Improved Photo Conversion Options!

StitchCraft has improved the wizard for converting photos to charts. You can now select the type of chart, the palette brand and range, the material brand and range, the size of the chart plus you can select from options such as the background and the detail of the conversion. StitchCraft also allows you to go back if you want to change anything at any time before the conversion.

100 New Symbols Added!

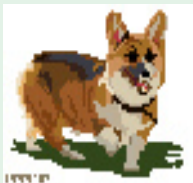
As requested by you StitchCraft has added another 100 symbols to choose from. StitchCraft now has 600 different symbols to use.

Other New Features Include:

- Rotate Whole Chart
- Improved Simulation
- Improved Multi Document Interface

StitchCraft User Disks

StitchCraft has six different User Disks available each containing 50 designs created by StitchCraft users from all around the world.



Contribute one of your own original designs for inclusion in the next StitchCraft User Disk and we will send you (via e-mail) a StitchCraft User Disk of your choice. Contribute six of your own designs and we'll send you all six StitchCraft User Disks.



www.stitchcraft.info/users/usercharts.htm

For a full list of **New Features** - www.stitchcraft.info/new2006.htm

To download a **Demo** - www.stitchcraft.info/demo.htm

To place an **Order** - www.stitchcraft.info/order.htm

To order an **Upgrade** - https://www.cia.com.au/stitch/order_upgrade.htm